

MAITLAND STREET SCHOOL

COMMUNITY UPDATE #9 – MARCH 2026
PACIFIC BROOK CHRISTIAN SCHOOL

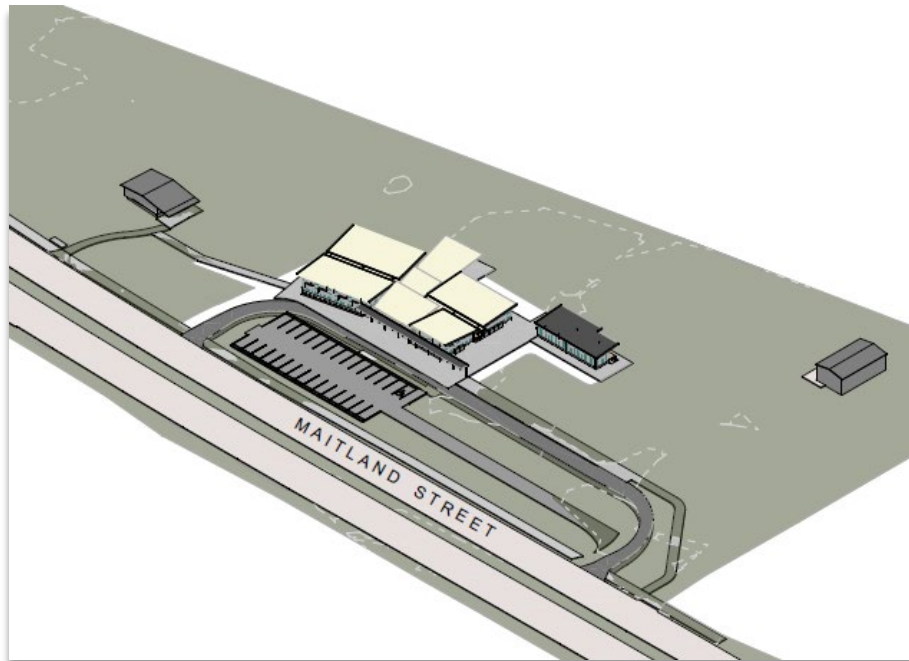


Figure: 3D Perspective of Stage 1 Development (Source: NBRIS Architecture)

Project Update – Construction Works

At the end of last year, we advised that early works had commenced at 72–74 Maitland Street, including controlled tree removal, site clearing, and initial site preparation. These activities have now been completed and have prepared the site for the next stage of the project when approvals and funding arrangements are finalised.

Builder Appointment

As part of the project planning process, a number of builders have been carefully considered through a comprehensive evaluation and procurement process. While constructive discussions have taken place, no builder has yet been formally appointed.

The project team is currently undertaking further discussions with our bank and the Board to ensure the most prudent and sustainable pathway forward before any contractual commitments are made. This additional period of consideration has resulted in a delay to the overall program, as we prioritise sound governance and long-term financial stewardship.

WHAT'S IN THIS UPDATE #9

Works have commenced at 72-74 Maitland Street, with tree removal and site preparations completed.

Our project team is undertaking further discussions with our bank and Board before final construction contracts are signed.

We continue to operate from our 30 Sowerby Street campus under an extended approval.

Thank you for your continued support and your prayers for Pacific Brook Christian School.

Happy Easter.

Construction Timeline

As a result, the commencement of major construction works has been deferred. Once the funding structure and delivery approach are finalised and endorsed, the next stages including earthworks, construction, carpark, and roadworks will be confirmed.

We will provide our next update once these discussions have concluded.

30 Sowerby Street

We remain grateful for the continued use of Sowerby Street, made possible through the generosity of the Presbyterian Property Trust. This support remains vital as we carefully and responsibly navigate the next phase for the Maitland Street site.

An Easter Message to Our Community

Easter reminds us that the first disciples walked through confusion, loss, and unmet hopes before they understood what God was doing. A community leader in Muswellbrook, Mr Jim Dugan said to me recently:

“God knows what He’s doing, and He’s doing it, even when we don’t understand”.

Those early disciples didn’t understand what was going on for Jesus, their lives had been dedicated to following Him and now what do they do? It wasn’t until later when Jesus was resurrected that He opened the minds of the disciples so they understood the context of the cross, “You do not realise now what I am doing, but later you will understand” John 13:7.

Even though at times when we don’t understand what’s happening around us, we can remember that God’s ways are higher than our ways (Isaiah 55), and as we continue to trust in Him we can know that He will strengthen us and bring us through every trial with hope and joy.